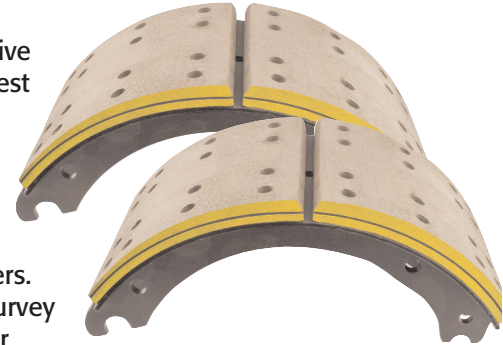


## Haldex Brake Lining Application Survey

This **BRAKEZONE** application guide is designed to be a simple, yet comprehensive tool to assist you in determining the proper range of Haldex brake linings that are best suited for your equipment based on your fleet's specific operating environment.

To properly use this application guide, first complete the application survey below. Choose only one answer per question that best describes the operating environment that you work within and record that score in the appropriate box. Once you have completed the survey, total the numeric values based on your answers. This total is your "Application Score". Refer to the charts on the reverse side of the survey to determine which Haldex brake linings are in your **BRAKEZONE** based on your personalized Application Score.



### 1 Which best describes how this vehicle is normally loaded in an average day of operation?

- Normally runs below axle rating
- Normally runs about axle rating
- Normally runs above axle rating
- The vehicle is used in refuse/mixer/dump type operations

Application Score

2  
3  
4  
5

Record score here

### 2 Which best describes the terrain that this vehicle covers in an average day of operation?

- Flat or mostly (90%) flat with some rolling hills
- Rolling hills encountered frequently with some steep grades
- Steep grades abundant or significant mountainous terrain

Application Score

1  
2  
4

Record score here

### 3 Which best describes this vehicle's travel patterns during an average day of operation?

- Nearly all (85%) interstate travel
- Mix of interstate, city, two-lane blacktop
- All urban
- This vehicle is a school bus
- This vehicle is used in mixer/dump type operations
- This vehicle is used in refuse type operations

Application Score

.5 (1/2)  
2  
3  
3  
6

Record score here

### 4 Total the three scores. This is your **BRAKEZONE** Application Score.

# BRAKEZONE



## 20,000 lb Axles Haldex Brake Lining Options

BRAKEZONE Application Score	GN	GF	GR	GD	GH	GG	GC	GZ	GP	GM
	3.5	G	B	T						
4.5	G	B	T							
5	G	B	T							
5.5	G	B	T							
6		G	B	T						
6.5		G	B	T						
7		G	B	T						
7.5		G	B	T						
8		G	B	T		EP				
8.5			G	B	T	EP				
9			G	B	T	EP				
9.5				G	B	T/EP				
10				G	B	T/EP				
11				G	B	T/EP				
12					G	T	EP			
13					G	T	EP			
14						B	T	EP		
15						B	T	EP		

Use this chart if your vehicle is equipped with 20,000 lb. axles

## 23,000 lb Axles Haldex Brake Lining Options

BRAKEZONE Application Score	GD	GH	GG	GC	GZ	GP	GM
	3.5	G	B	T/EP			
4.5	G	B	T/EP				
5	G	B	T/EP				
5.5	G	B	T/EP				
6	G	B	T/EP				
6.5	G	B	T/EP				
7	G	B	T/EP				
7.5	G	B	T/EP				
8	G	B	T/EP				
8.5	G	B	T/EP				
9			G	B	T		
9.5			G	B	T		
10			G	B	T		
11			G	B	T		
12				G	B	T	EP
13				G	B	T	EP
14					G	B	T
15					G	B	T

Use this chart if your vehicle is equipped with 23,000 lb. axles

### G = Good Performance

Very good stopping power. Good brake life, handles normal temperatures and load variability for this type of application.

### B = Better Performance

Very good stopping power. Very good brake life, handles higher temperature and load variability.

### T = Best Performance

Excellent stopping power, superior brake life. Handles high operating temperatures and load variability with ease for this type of application.

### EP = Exceptional Performance

All the benefits of best performance plus significant gains in lowering life cycle costs by extending lining life to its maximum. Highly compatible with brake drums for this type of application – lowest total life cycle costs.

### = CAUTION

Potential under or over Spec' ing zone.

## Directions for use:

1. Find your Application Score from the **BRAKEZONE** Application Survey on the reverse side.
2. Find your Application Score on the appropriate **BRAKEZONE** lining options chart above.
3. Listed to the right of your score will be the Haldex brake lining options that will put you in your **BRAKEZONE** – exceptional performance and lower life cycle costs.
4. Contact your local Haldex Distributor for delivery of high-quality brake shoes. Use the proper Haldex brake lining based on your specific operating environment as determined by your Application Score.



1-800-643-2374

www.haldex.com

LF20613 US Rev. 1/10 2M ALP